

# Direct Plug Kits

## MIG Welding Accessory

Issued Nov. 2006 • SPEC DPK-1.1

Miller® Accu-Mate™ direct plug kit shown attached to Bernard Mig Q-Gun™



### The Right Tool for the Job.

Extremely durable and easy to maintain, our direct plug kits let you connect our MIG guns to most any feeder or machine on the market.

**Interchangeable direct plugs** connect to wire feeders and machines from major manufacturers.

**Rigid strain relief has thick walls and integrated power pin bushing** for increased durability and reduces parts.

**Direct plugs can be changed without removing rigid strain relief and trigger cable adapters** make cutting and splicing trigger wires unnecessary to ease maintenance and reduce operator downtime.

**NOTE:** Direct plug kits include strain relief set, adapter block and screw (where applicable) for adaptation to guns with old-style direct plug.

Made with  
Pride and without  
Compromise in the **USA**

### Bernard®

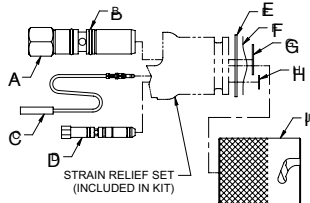
An Illinois Tool Works Company  
449 West Corning Road, Box 667  
Beecher, Illinois 60401 USA

Phone: 800-946-2281 (US Only) 708-946-2281 (Outside US)  
Fax: 708-946-6726  
For more information, visit us at [BernardWelds.com](http://BernardWelds.com)

**BERNARD®**

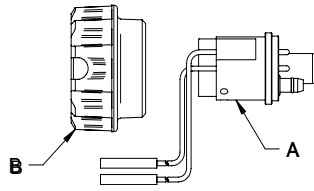
# Available Direct Plug Kits & Replacement Parts

## BERNARD



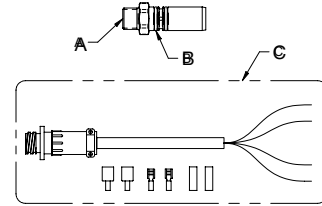
<b>BERNARD QUICK DISCONNECT KIT</b>	<b>1199</b>
A. Power Pin Assembly	2200008
B. O-Ring (2 Required)	4929
C. Lead Wire (2 Required)	4924
D. Gas Pin Assembly	2060033
E. Snap Ring, Large	4911
F. Wave Ring	4916
G. Snap Ring, Medium	4912
H. Snap Ring, Small	2250016
I. Locking Sleeve	4925

## EURO



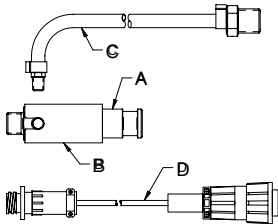
<b>EURO DIRECT PLUG KIT</b>	<b>1199E</b>
A. Euro Block Assembly	5060
B. Adaptor Nut	4816

## HOBART



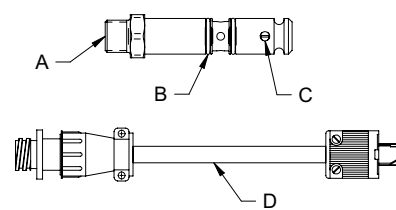
<b>HOBART DIRECT PLUG KIT</b>	<b>1199H</b>
A. Power Pin Assembly	2200098
B. O-Ring (2 Required)	4713
C. Trigger Cable Adapter	SCT1N

## LINCOLN



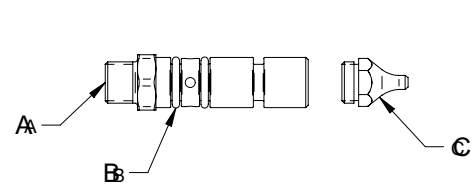
<b>LINCOLN DIRECT PLUG KIT</b>	<b>1199L</b>
A. Power Pin	2200099
B. Insulator	1840059
C. Gas Line Assembly	GLM1
D. Trigger Cable Adapter	SCL1N

## L-TEC



<b>L-TEC DIRECT PLUG KIT</b>	<b>1199LT</b>
A. Power Pin Assembly	2200100
B. O-Ring (2 Required)	4713
C. Set Screw	4714
D. Trigger Cable Adapter	SCX1N

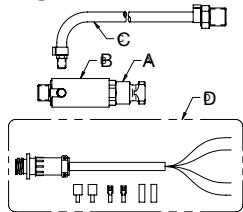
## MILLER



<b>MILLER DIRECT PLUG KIT</b>	<b>1199M</b>
A. Power Pin Assembly	2200101
B. O-Ring (2 Required)	4478
C. Power Pin Tip (.023" - .045")	4477
Power Pin Tip (3/32" - 1/8")	4474
*Power Pin Tip (.052" - 5/64")	4477-564
Power Pin Tips for Aluminum Wire	
*Power Pin Tip (.030" - .035")	2200105
*Power Pin Tip (.040" - 3/64")	2200106
*Power Pin Tip (.052" - 1/16")	2200107

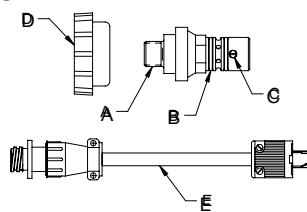
\*Optional

## NATIONAL



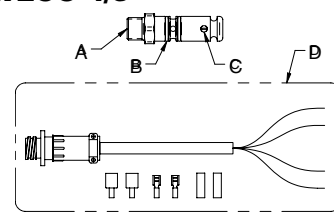
<b>NATIONAL DIRECT PLUG KIT</b>	<b>1199N</b>
A. Power Pin	2200102
B. Insulator	1840059
C. Gas Line Assembly	GLM1
D. Trigger Cable Adapter	SCT1N

## OXO



<b>OXO DIRECT PLUG KIT</b>	<b>1199X</b>
A. Power Pin Assembly	2200108
B. O-Ring (2 Required)	4929
C. Set Screw	4714
D. Adaptor Nut	6234
E. Trigger Cable Adapter	SCX1N

## TWECO 4/5



<b>TWECO 4 DIRECT PLUG KIT</b>	<b>1199T4</b>
<b>TWECO 5 DIRECT PLUG KIT</b>	<b>1199T5</b>
A. Power Pin Assembly (Tweco 4)	2200103
Power Pin Assembly (Tweco 5)	2200104
B. O-Ring (2 Req'd - Tweco 4)	4713
O-Ring (2 Req'd - Tweco 5)	4929
C. Set Screw	4714
D. Trigger Cable Adapter	SCT1N
*Trigger Cable Adapter, Lincoln	SCL1N
*Trigger Cable Adapter, ESAB	SCX1N

\*Optional