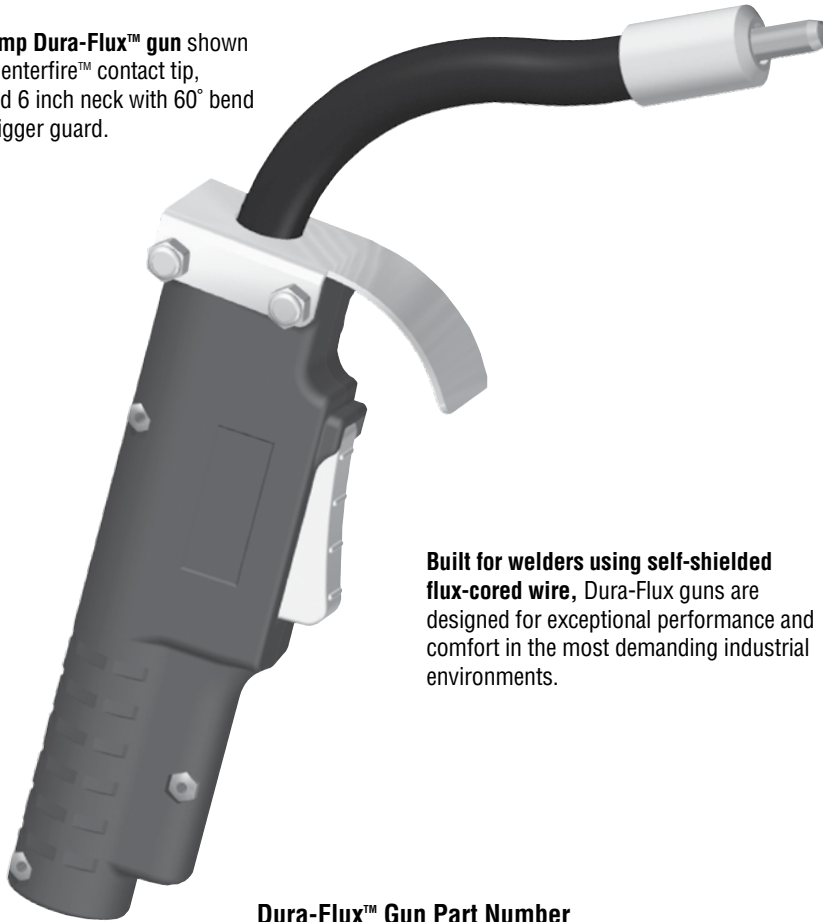


Dura-Flux™

350 Amp Self-Shielded FCAW Guns

Issued June 2011 • Index No. SPEC DF-1.8

350 Amp Dura-Flux™ gun shown with Centerfire™ contact tip, sleeved 6 inch neck with 60° bend and trigger guard.



Built for welders using self-shielded flux-cored wire, Dura-Flux guns are designed for exceptional performance and comfort in the most demanding industrial environments.

Dura-Flux™ Gun Part Number

Build a Dura-Flux gun part number by choosing required cable length, neck and direct plug.

FLX3515AM is an example of a typical configuration. It consists of a 350 amp Dura-Flux gun with 15' cable, 6" x 60° neck and Miller style direct plug.

| Amperage | Cable Length | Necks | Direct Plug | Duty Cycle |
|--|------------------------|---------------------------------------|-------------------|----------------------|
| FLX35 350 amp | 08 8' (2.44 m) | B Sleeved, 6" (15.2 cm) x 30° | M Miller® | 60% NEMA at 350 Amps |
| FLH35 350 amp | 10 10' (3.05 m) | A Sleeved, 6" (15.2 cm) x 60° | L Lincoln® | |
| FLX = Small trigger guard FLH = Large heat shield | 12 12' (3.66 m) | C Sleeved, 8" (20.3 cm) x 90° | T Tweco® | |
| | 15 15' (4.57 m) | D Sleeved, 12" (30.5 cm) x 30° | E Euro® | |
| | 20 20' (6.16 m) | E Sleeved, 12" (30.5 cm) x 60° | | |
| | 25 25' (7.63 m) | N Armored, 6" (15.2 cm) x 30° | | |
| | | O Armored, 6" (15.2 cm) x 60° | | |
| | | P Armored, 8" (20.3 cm) x 90° | | |
| | | Q Armored, 12" (30.5 cm) x 30° | | |
| | | R Armored, 12" (30.5 cm) x 60° | | |

All Dura-Flux guns are compatible with 1/16" - 3/32" (1.6 mm - 2.4 mm) wire.

Bernard® and Miller® are registered trademarks of Illinois Tool Works Inc. Other brands mentioned are for reference only and are the registered trademarks of their respective companies, and are not affiliated with Illinois Tool Works Inc.

All Guns are Not Created Equal.

A welding gun should be durable, easy to use and customized to your specific application. Our guns put you in control: you choose the options you need and we'll build a gun to last. We even ship most of our guns within 24 hours.

Centerfire™ contact tips are easy-to-use and high performing - they provide better arc starts, less spatter and more consistent welds - and also last up to three times longer than competitive brands.

Sleeved and aluminum armored necks available in multiple length options for optimal weld accessibility and improved operator comfort.

Trigger is sealed from outside contaminants, simply replaced and absorbs less heat than a metal trigger for long-life, greater arc-on time and lower heat output.

Trigger guard instead of full size heat shield allows access to tight spaces while protecting trigger from damage.

Ultra heavy-duty steel monocoil power cables are highly resistant to kinking for exceptional wire feed in abusive environments.

Back end with durable rigid strain relief and easily interchangeable direct plugs and trigger leads connect to wire feeders and machines from major manufacturers and allow simple maintenance.

CALIFORNIA PROPOSITION 65 WARNING

This product contains chemicals, including lead, known to the state of California to cause cancer, and birth defects or other reproductive harm. *Wash hands after use.*

Made with
Pride and without
Compromise in the **USA**

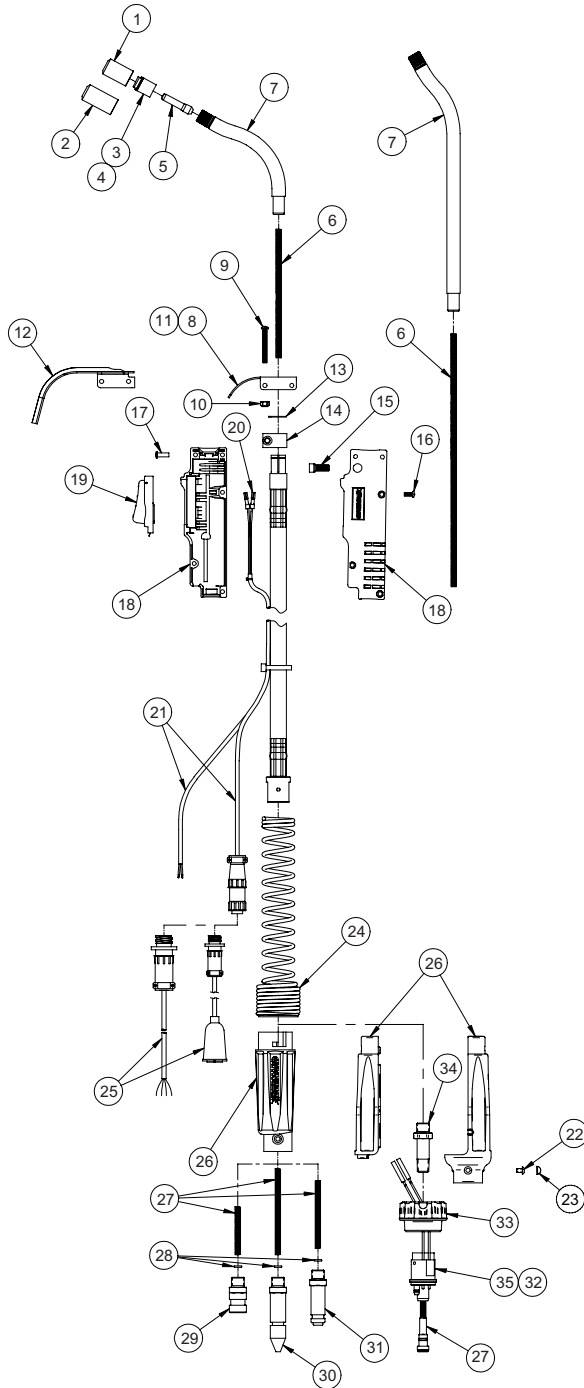
Bernard®

An Illinois Tool Works Company
449 West Corning Road, Box 667
Beecher, Illinois 60401 USA

Phone: 800-946-2281 (US Only) 708-946-2281 (Outside US)
Fax: 708-946-6726
For more information, visit us at BernardWelds.com



Replacement Parts List



| ITEM # | PART # | DESCRIPTION |
|---------|---------------------------------------|---|
| 1 | 7010024 | Insulator, Tip |
| 2 | 7010059 | Heavy-Duty Insulator, Tip |
| 3 | 7010026 | Tip Holder, Slip-On |
| 4 | 1880229 | Tip Holder Kit (Includes: (1) #1, (1) #2), (1) #3) |
| 5 | T-062 | Centerfire Contact Tip, 1/16" (1.6 mm) |
| | T-072 | Centerfire Contact Tip, .072" (1.8 mm) (Included w/Gun) |
| | T-078 | Centerfire Contact Tip, 5/64" (2.0 mm) (Included w/Gun) |
| | T-094 | Centerfire Contact Tip, 3/32" (2.4 mm) (Included w/Gun) |
| 6 | 7010031 | Neck Liner, 6" (15.2 cm) |
| | 7010032 | Neck, Liner, 12" (30.5 cm) |
| 7 | | Neck Replacement Kit (Includes: (1) #6, (1) #7) |
| | 1880232 | Sleeved, 6" (15.2 cm) x 30° |
| | 1880222 | Sleeved, 6" (15.2 cm) x 60° (Pictured) |
| | 1880230 | Sleeved, 8" (20.3 cm) x 90° |
| | 1880223 | Sleeved, 12" (30.5 cm) x 30° (Pictured) |
| | 1880231 | Sleeved, 12" (30.5 cm) x 60° |
| | 1880236 | Aluminum Armored, 6" (15.2 cm) x 30° |
| | 1880233 | Aluminum Armored, 6" (15.2 cm) x 60° |
| | 1880235 | Aluminum Armored, 8" (20.3 cm) x 90° |
| | 1880234 | Aluminum Armored, 12" (30.5 cm) x 30° |
| 1880237 | Aluminum Armored, 12" (30.5 cm) x 60° | |
| 8 | 7010034 | Trigger Guard |
| 9 | 2280047 | Screw, #8-32 x 1-1/2 (2 Req'd) |
| 10 | 2030030 | Nut, #8-32 (2 Req'd) |
| 11 | 1880224 | Trigger Guard Kit (Includes: (1) #8, (2) #9, (2) #10) |
| 12 | 1760002 | Heat Shield (Optional) |
| 13 | 2250017 | Snap Ring |
| 14 | 198820 | Clamp |
| 15 | 2280046 | Screw, 1/4-20, Hex Socket |
| 16 | 4209 | Handle Screw (3 Req'd) |
| 17 | 2030004 | Post Fastener (3 Req'd) |
| 18 | 1880225 | Handle Kit (Includes: Handle Halves, (3) #15, (3) #16, (3) #17) |
| 19 | 5662 | Switch Assy, Trigger |
| 20 | 2660001 | Terminal, Quick Disconnect (2 Req'd) |
| 21 | 7010018 | Cord Assembly, 10' (3.05 m) |
| | 7010049 | Cord Assembly, Euro, 10' (3.05 m) |
| | 7010015 | Cord Assembly, 15' (4.57 m) |
| | 7010050 | Cord Assembly, Euro, 15' (4.57 m) |
| 22 | 2280056 | Screw, Strain Relief |
| 23 | 1620003 | Screw Cover, Strain Relief |
| 24 | 2520056 | Spring, Strain Relief |
| 25 | SCL2N | Trigger Cord Adapter (Lincoln Only) |
| | SCT1N | Trigger Cord Adapter (Tweco 4 Only) |
| 26 | 2520047 | Rigid Strain Relief |
| | 2520069 | Rigid Strain Relief, Euro |
| 27 | 7010035 | Liner, Power Pin, Miller |
| | 7010036 | Liner, Power Pin, Lincoln |
| | 7010047 | Liner, Power Pin, Tweco 4 |
| | 7010048 | Liner, Power Pin, Euro |
| 28 | 2040017 | O-Ring |
| 29 | 1880227 | Lincoln Power Pin Kit (Includes: Lincoln Power Pin, (1) #24, (1) #26) |
| 30 | 1880226 | Miller Power Pin Kit (Includes: Miller Power Pin, (1) #26) |
| 31 | 1880242 | Tweco 4 Power Pin Kit (Includes: Tweco 4 Power Pin, (1) #24, (1) #26) |
| 32 | 1880241 | Euro Kit (Includes: (1) #26, (1) #32, (1) #33), (1) #34) |
| 33 | 4816 | Adapter Nut (Euro Only) |
| 34 | 2020015 | Nipple (Euro Only) |
| 35 | 5060 | Euro Block Assembly (Euro Only) |