

# Manual Products

## Cable Connectors, Lugs, Splicers

Issued Jan. 2013 • SPEC MP-1.5

### Time Tested Performance.

Our Manual Welding Products provide high quality with a wide range of styles, sizes and capacities to enhance your welding applications.

**Bernard Manual Welding  
Products**



### Cable Connectors

- Heavy-duty ball-point set screw cable connection
- Fully insulated covers for maximum safety
- Interchangeable with most popular models
- Connector locking screw designed for longer life and superior electrical connection

### Positive Lock Terminal Lugs

- Lug screw designed for enhanced field repairability
- Composite copper alloys for superior conductivity
- Increased cable depth for better connections
- Fully insulated covers are heat, oil and abrasion resistant

### Hammer-on Cable Lugs & Splicers

- Simple as driving a nail to attach
- No soldering, no bolting, no set screws, no crimping tools required
- Twice as heavy as most crimp-type connectors
- Same conductivity as the cable they connect

### Solder Type Lugs

- Copper alloy for excellent electrical conductivity
- Flared end for easy cable access
- Stud hole size 17/32

Made with  
Pride and without  
Compromise in the **USA**

### Bernard

An Illinois Tool Works Company  
449 West Corning Road, Box 667  
Beecher, Illinois 60401 USA

Phone: 800-946-2281 (US Only) 708-946-2281 (Outside US)  
Fax: 708-946-6726  
For more information, visit us at [BernardWelds.com](http://BernardWelds.com)



# Available Manual Products

## CABLE CONNECTORS

Model:	<b>1BC</b>	<b>2-1BC</b>	<b>2BC</b>	<b>4BC</b>
Cable Sizes:	4,2,1 (35-50 mm <sup>2</sup> )	4,2,1 (35-50 mm <sup>2</sup> )	1/0, 2/0, 3/0 (50-70 mm <sup>2</sup> )	3/0, 4/0 (70-95 mm <sup>2</sup> )
Details:	1BC-F: Female 1BC-M: Male	Mates w/ 2BC-F or 4BC-F	2BC-F: Female 2BC-M: Male	4BC-F: Female 4BC-M: Male



## TERMINAL LUGS

Model:	<b>B-1AF</b>	<b>B-2AF</b>
Accepts Cable Connector(s):	1BC-M	2BC-M, 4BC-M, 2-1BC



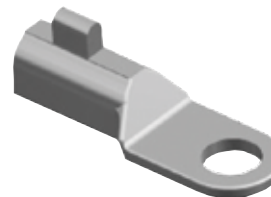
## SOLDER TYPE LUGS

Model:	<b>B-62</b>	<b>B-120</b>	<b>B-3040</b>
Cable Size:	6-2	1-2/0	3/0 and 4/0
Amperage Rating:	150	225	250
Size of Stud Hole:	17/32"	17/32"	17/32"
I.D. Cable Socket:	.461"	.559"	.660"



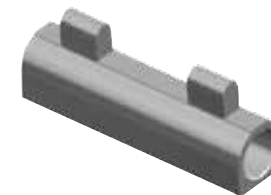
## HAMMER-ON TYPE LUGS

Model:	<b>L11</b>	<b>L22</b>	<b>L33</b>
Cable Sizes:	3/0 and 4/0	1/0 and 2/0	2 and 1
Size of Stud Hole:	21/32"	17/32"	33/64"
I.D. Cable Socket:	5/8"	33/64"	13/32"



## SPLICERS

Model:	<b>S11</b>	<b>S22</b>	<b>S33</b>
Cable Sizes:	3/0 and 4/0	1/0 and 2/0	2 and 1
I.D. Cable Socket:	5/8"	33/64"	13/32"



**Bernard connectors are interchangeable with these products:**

Bernard™	Tweco®	Lenco®	Jackson®
1BC*	MPC/1 MBP	LC 10	UB-1-BP
2BC*	2 MPC/2 MBP	LC 40	UD-3-BP
4BC*	4 MPC/4 MBP	LC 40 HD	UB-4-BP
2-1BC	2-1-MBP	LC 1040	UWB-BP
B-1AF	1-AF	CT-10FA	N/A
B-2AF	2-AF	CT-40FA	N/A

\*Male and Female sold separately in standard packs of two

Bernard™ is a trademark of Illinois Tool Works, Inc. Other brands mentioned are for reference only and are the registered trademarks of their respective companies. Illinois Tool Works, Inc. is not affiliated with these other companies.